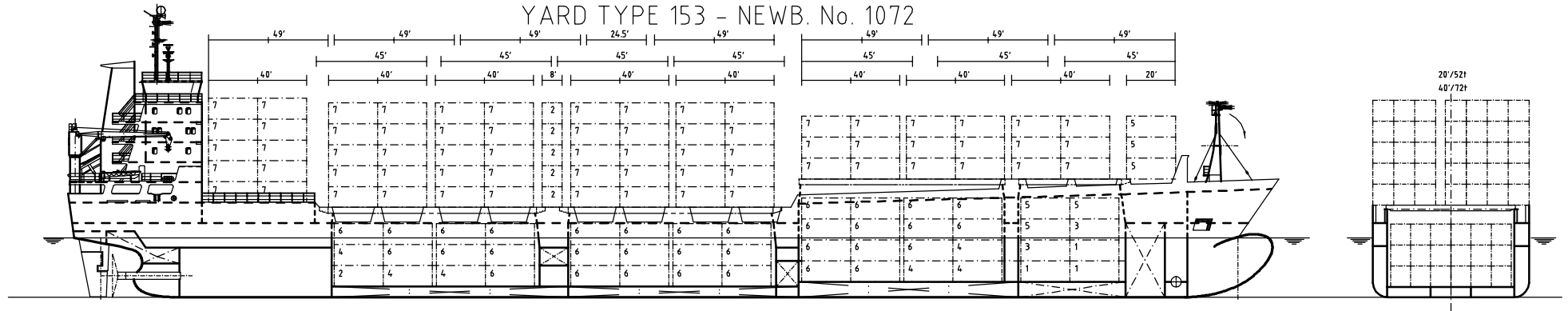


CONTAINER MOTOR VESSEL

28/03/94; Di/cq

YARD TYPE 153 – NEWB. No. 1072



CLASS: GERM. LLOYD + 100 A5 E3 "CONTAINERSHIP" "SOLAS II-2, Reg. 54" + MC E3 AUT

FOUR HATCHES †DECK: HATCH I : 12.40 m x 12.80 m
HATCH II - IV : 25.10 m x 15.80 m

LENGTH O. A./B. P. ABT. 151.14 m/141.40 m
BREADTH MOULDED ABT. 19.40 m
DEPTH ABT. 9.30 m
DRAUGHT LOADED/DESIGN ABT. 7.44 m
TRIAL SPEED ABT. 20.00 kn
DEADWEIGHT ALL TOLD (WITHOUT
TWEENDECK HATCH COVERS) ABT. 8.932 tdw
MEASUREMENT LONDON-RULES ABT. GT/NT 7550/3957

HYDR. OPERATED FOLDING STEEL HATCH COVERS; CONTAINER LOADING: 52 †
PER 20'/24.5'/30', 72 † PER 40'/45'/49'-CONTAINER PLACE POINT LOAD

ENGINE: MEDIUM SPEED DIESEL MOTOR MAK 8M 601C WITH ABT. 9.300 kW; FUEL
IF-380; V.P. PROPELLER; TWO DIESEL GENERATORS 435 kVA (GASOIL) EACH;
ONE EMERGENCY/HARBOUR GENERATOR; ONE SHAFT GENERATOR 1.540 kW;
ONE BOW THRUSTER 600 kW; 380 V/50 C.P.S.; 102 REEFER PLUGS

FITTED FOR CONTAINERS, WITHOUT CELL-GUIDES

CONSUMPTION SERVICE COND. (INCL.
ISO-CONDITION 300 kW SHAFT GENERATOR)

CONTAINER BREADTH: HOLD: HATCH I : 2.50 m
(GENERALLY) HATCH II+III+IV : 2.60 m

18.0 KNOTS APPR.	24.9 †	30.5 †/DAY
19.0 KNOTS APPR.	28.6 †	33.9 †/DAY
19.5 KNOTS APPR.	31.8 †	37.5 †/DAY
20.0 KNOTS APPR.	36.3 †	42.0 †/DAY

DECK: 2.60 m

CONTAINER HEIGHT: HOLD I+II : 4 x 9.5'
(GENERALLY) HOLD III+IV : 3 x 9.5'

TANK CAPACITIES: FRESHWATER ABT. 136 †
GASOIL ABT. 84 †
FUEL OIL ABT. 769 †
WATER BALLAST ABT. 3612 †

CONTAINER INTAKE:	20'	40'	+	20'
IN HOLD	248	100	+	48
ON DECK	501	243	+	15
TOTAL CAPACITY	749	343	+	63

WITHOUT CONSIDERATION OF THE SIGHT BEAM

STABILITY CONDITION (T = 7.44 m): ABT.453/376 TEU OF 14/20 † EACH

TRANSPORTATION OF 24.5', 30', 45' and 49'-CONTAINERS ON DECK AND IN THE HOLD IS PARTLY POSSIBLE

MODERN NAUTICAL EQUIPMENT/NAUTICAL BRIDGE "OPTIMALE BRŠCKE"

J. J. SIETAS KG
SCHIFFSWERFT GmbH u. CO.
NEUFELDER FZHRDEICH 88
21129 HAMBURG
PHONE: 040/74511-01
FAX : 040/74511296
TELEX: 217740

MS "CONTAINERSHIPS IV"
HANS-PETER WEGENER KG
GROSS HOVE 39
21635 JORK