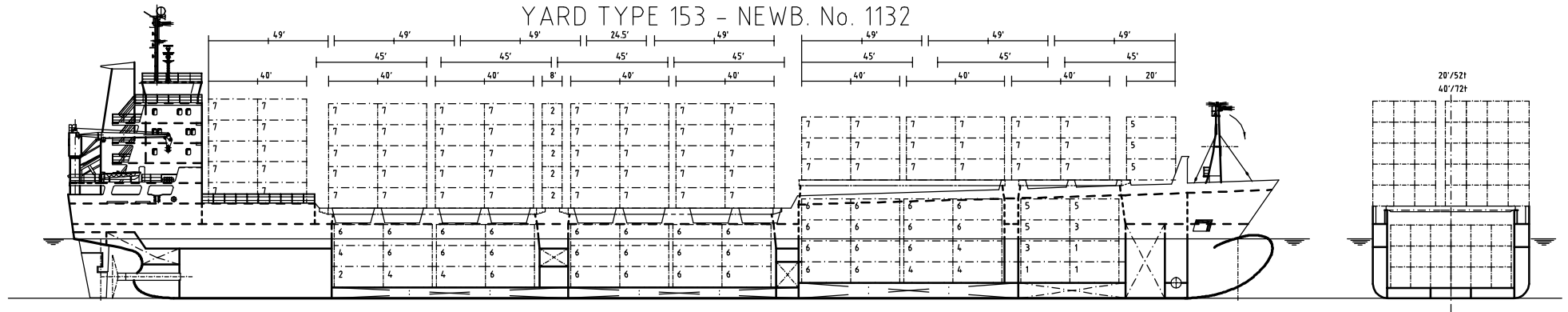


CONTAINER MOTOR VESSEL

06/05/96; Di/cq

YARD TYPE 153 - NEWB. No. 1132



CLASS: GERM. LLOYD + 100 A5 E3 "CONTAINERSHIP" "SOLAS II-2, Reg. 54"
"C2 P51"+ MC E3 AUT

FOUR HATCHES \uparrow DECK: HATCH I : 12.40 m x 12.80 m
HATCH II - IV : 25.10 m x 15.80 m

LENGTH O. A./B. P. 151.14 m/141.40 m
BREADTH MOULDED 19.40 m
DEPTH 9.30 m
DRAUGHT LOADED/DESIGN 7.44 m
TRIAL SPEED 20.00 kn
DEADWEIGHT ALL TOLD (WITHOUT
TWEENDECK HATCH COVERS) 8.912 tdw
MEASUREMENT LONDON-RULES GT/NT 7550/3957

HYDR. OPERATED FOLDING STEEL HATCH COVERS; CONTAINER LOADING: 52 \dagger
PER 20'/24.5'/30', 72 \dagger PER 40'/45'/49'-CONTAINER PLACE POINT LOAD

ENGINE: MEDIUM SPEED DIESEL MOTOR MAK 8M 601C WITH ABT. 10.000 kW; FUEL
IF-380; V.P. PROPELLER; TWO DIESEL GENERATORS 400 kVA (GASOIL) EACH;
ONE EMERGENCY/HARBOUR GENERATOR; ONE SHAFT GENERATOR 1.540 kW;
ONE BOW THRUSTER 600 kW; 380 V/50 C.P.S.; 102 REEFER PLUGS

FITTED FOR CONTAINERS, WITHOUT CELL-GUIDES

CONSUMPTION SERVICE COND. (INCL.
ISO-CONDITION 300 kW SHAFT GENERATOR)

CONTAINER BREADTH: HOLD: HATCH I : 2.50 m
(GENERALLY) HATCH II+III+IV : 2.60 m
DECK: 2.60 m

18.0 KNOTS APPR. 24.9 \dagger	30.5 \dagger /DAY
19.0 KNOTS APPR. 28.6 \dagger	33.9 \dagger /DAY
19.5 KNOTS APPR. 31.8 \dagger	37.5 \dagger /DAY
20.0 KNOTS APPR. 36.3 \dagger	42.0 \dagger /DAY

CONTAINER HEIGHT: HOLD I+II : 4 x 9.5'
(GENERALLY) HOLD III+IV : 3 x 9.5'

TANK CAPACITIES: FRESHWATER ABT. 136 \dagger
GASOIL ABT. 84 \dagger
FUEL OIL ABT. 769 \dagger
WATER BALLAST ABT. 3467 \dagger

CONTAINER INTAKE:	20'	40'	+	20'
IN HOLD	248	100	+	48
ON DECK	501	243	+	15
TOTAL CAPACITY	749	343	+	63

WITHOUT CONSIDERATION OF THE SIGHT BEAM

J. J. SIETAS KG SCHIFFSWERFT GmbH u. CO. NEUENFELDER FÄHRDEICH 88 21129 HAMBURG PHONE: 040/74511-01 FAX : 040/74511296 TELEX: 217740	MS "CONTAINERSHIPS V" HANS-PETER WEGENER KG GROSS HOVE 39 21635 JORK
--------------------------------------------------------------------------------------------------------------------------------------------------------	-------------------------------------------------------------------------------

STABILITY CONDITION (T = 7.44 m): ABT. 453/376 TEU OF 14/20 \dagger EACH

TRANSPORTATION OF 24.5', 30', 45' and 49'-CONTAINERS ON DECK AND IN THE HOLD IS PARTLY POSSIBLE

MODERN NAUTICAL EQUIPMENT/NAUTICAL BRIDGE "OPTIMALE BRÜCKE"